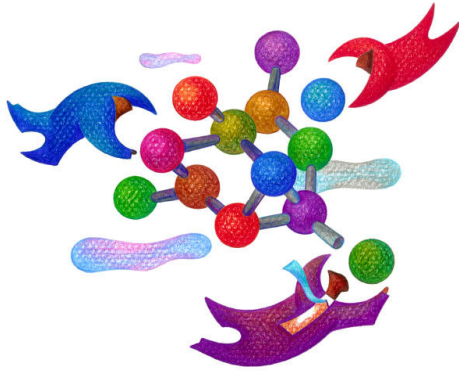


Business Operational Excellence Series

Lean Overview Session



Participate in a hands-on activity that will demonstrate the power of the Lean tools

THE POWER OF LEAN!

Problem - Customers are complaining about billing and invoicing errors.

Solution - Use **Value Stream Mapping** to find the waste in your processes.

Problem - There is always a "mad dash" to clean up the place when customers visit.

Solution - Implementing **5S** will make your facility "tour ready" anytime.

Problem - Scheduling is a nightmare; it always changes.

Solution - Establishing a **Cellular Workplace with Standardized Work** can make scheduling and planning an effective and reliable process.

Overview Participant Feedback

"I thought the overview session was fantastic. It really got the wheels turning and piqued my interest in pursuing this as soon as possible."
~ Joanne Smits—HC Miller Company



SESSION IS SCHEDULED 8AM TO 12:30PM ON
NOVEMBER 19, 2009
DECEMBER 17, 2009
JANUARY 21, 2010

Workforce Economics, Inc.

1401 McMahon Drive
Neenah WI 54956

Contact: jim.eagan@workforceeconomics.org 920.720.5600 x316
or david.dipietro@workforceeconomics.org 920.720.5600 x308

Cost: \$35/person (Includes Training Materials and Refreshments)

Business Operational Excellence Series

Lean Overview Session

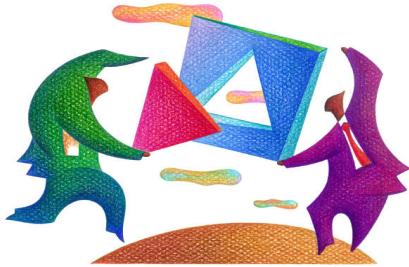
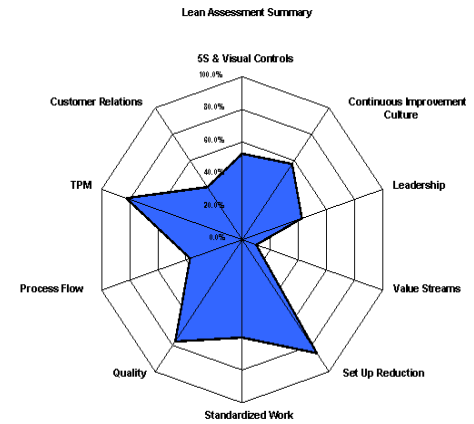
Receive a Free 4-hour Assessment
 (\$500 value)

Assessment Purpose

- Determine the strengths and weaknesses of your organization.
- 10 key elements are scored and plotted on a radar chart.
- Actions plans are developed based on the scoring.
- Emphasis is placed on the greatest area of opportunity.

Deliverables

- Executive summary
- Interview Results
- Graphical view of Current State v. World-Class
- Recommendations and Call to Action



Mail to:

Workforce Economics, Inc.
Attn: LEAN TEAM
 1401 McMahon Drive
 Neenah, WI 54956
 FAX (920) 720-5606

Session: NL
 November 19, 2009 (8 am - 12:30 pm)
 December 17, 2009 (8 am - 12:30 pm)
 January 21, 2010 (8 am - 12:30 pm)

Payment Method: \$35 / Person

- Check enclosed or in mail
 (payable to Workforce Economics, Inc.)
- Bill my organization:

Attn: _____

Note: Full registration fee due and payable prior to start of workshop session.

Company: _____

Address: _____

City: _____

State: _____ Zip: _____

Phone: _____

Fax: _____

Name: _____

Position: _____

Email: _____